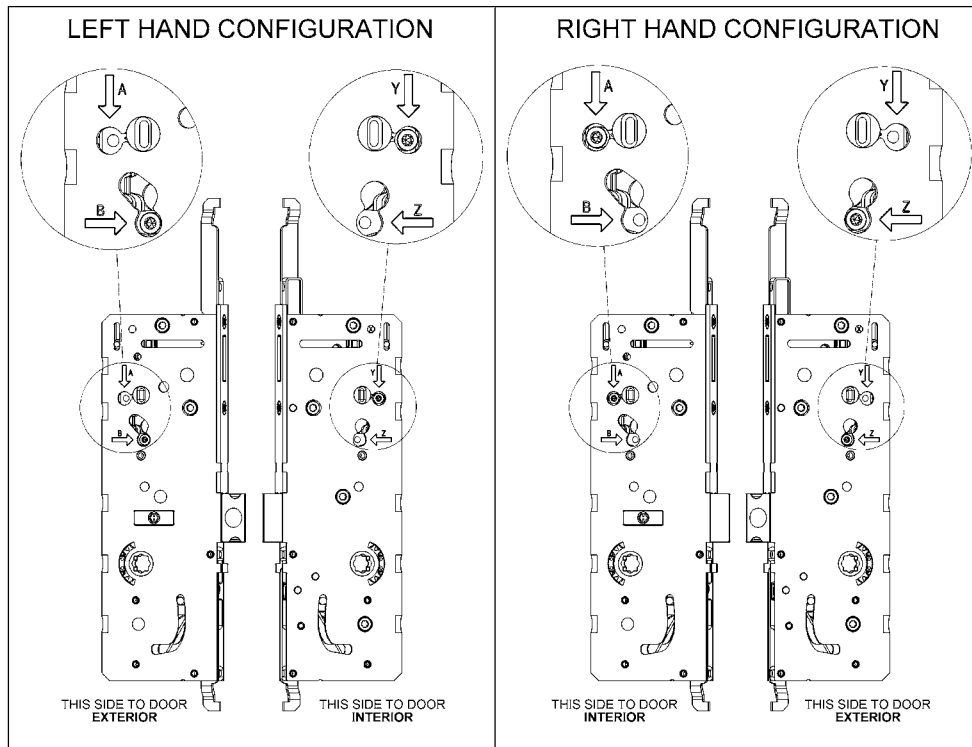


HLS™ 7 Series* Identifying & Reversing Gear Handing

IMPORTANT NOTE: Due to the Anti-Panic feature, this lock must be properly oriented to interior/exterior of door, in order for it to function properly.

Locate screw positions A, B, Y and Z on sides of lockcase. Using the graphic below, determine interior/exterior side and right/left hand by determining which two locations contain a screw.



To Reverse Handing of Gear:

IMPORTANT: USE ONLY A HAND SCREWDRIVER – NOT A POWER DRIVER

1. Locate screw positions A, B, Y and Z on sides of lockcase, and switch the locations of the screws according to the chart below.
2. To reverse latch, pull straight out and rotate 180°.

Handing Change	Remove From	Install Into
From Right Hand to Left Hand	A & Z	B & Y
From Left Hand to Right Hand	B & Y	A & Z

If both screws are installed in same side of lockcase, the gear will not function properly.

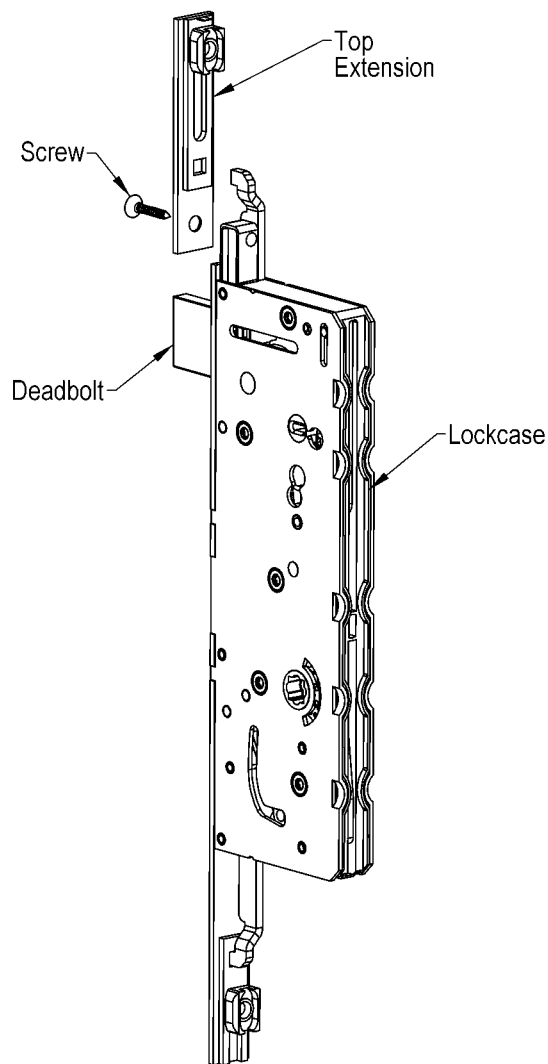
* Patent Pending

HLS™ 7 Series* Multipoint Locking Hardware Installation Instructions

1. Slide main gear into place aligning lockcase with pre-drilled handle holes or bottom of the door. Check to make sure the gear does not extend past the bottom of the door.
2. Slide top extension into place and fasten to door with a installation screw. Check again to make sure the gear does not extend past the bottom of the door.
3. Install backplates with mounting screws and hand tighten. See Handle Set Installation Instruction sheet on page 50.

NOTE:

Main gear and extensions should be hand tightened only.



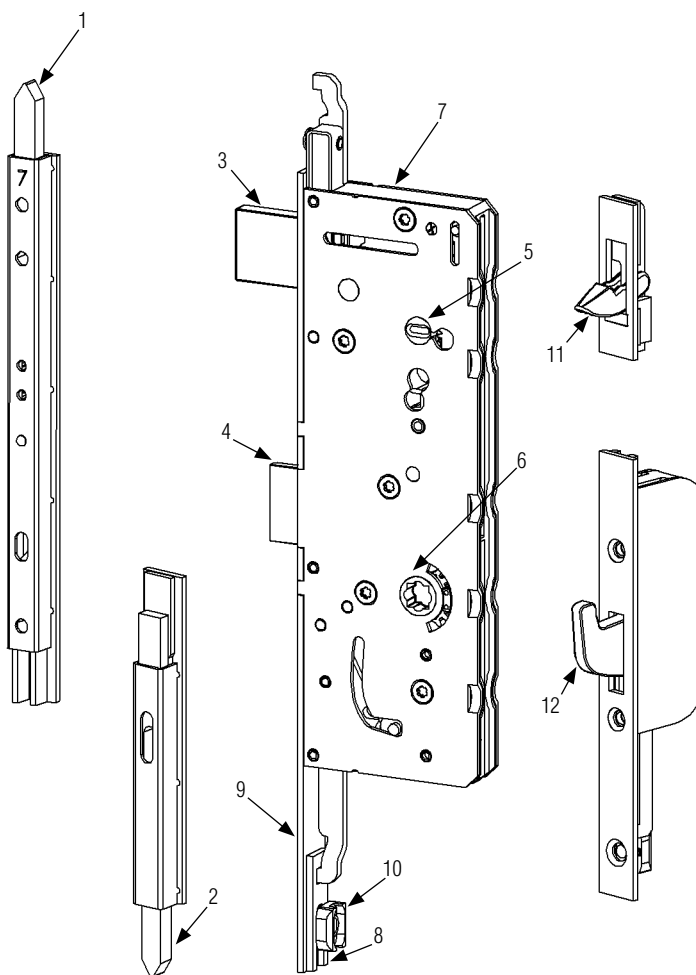
* Patent Pending

HLS™ 7 Series* System Terminology

1. Trim Maintenance:
Use water and a soft cloth to clean. Do not use brass cleaner as it will remove the protective coating.
2. **Note:** All options are shown for the sake of terminology. The gear system you have will NOT contain all the components as shown in the diagram below.

Terminology:

1. Top Shootbolt
2. Bottom Shootbolt
3. Deadbolt
4. Latch
5. Cylinder Tail Piece Hole
6. Handle Hole
7. Lockcase
8. Drive Rail
9. Faceplate
10. Screw Support
11. Tongue
12. Swinghook



* Patent Pending

HLS™ 7 Series* Inactive Gear Latch Blocker Instructions

The Latch Blocker is a design feature of the HLS™ 7 Series* multipoint gear system which enables the operational timing/sequencing between the active and inactive gears. The function of the Latch Blocker is to prevent the latch of the active system from engaging into the strike until the inactive system is activated. Once the inactive system is activated, the Latch Blocker moves out of the way enabling the latch to engage into the strike. The multipoint can then be activated.

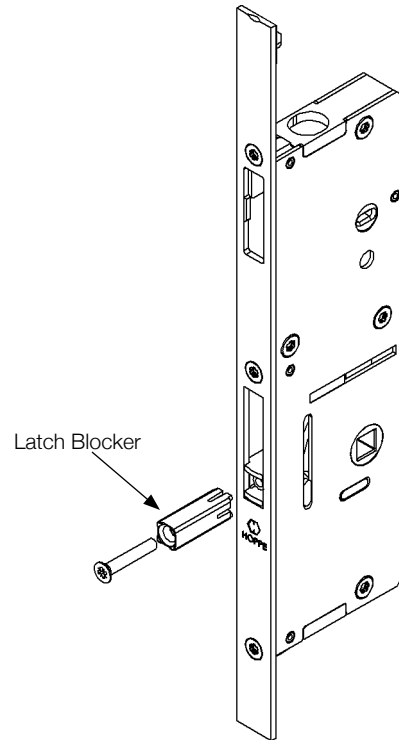
Astragal Thickness	Latch Blocker Length	Part Number
15 - 18.9mm (.59 - .74)	27.5mm	2787839
19 - 22.9mm (.75 - .90)	31.5mm	2787847
23 - 25.9mm (.91 - 1.02)	35.5mm	2787855
26 - 29mm (1.02 - 1.14)	37.5mm	2787863

Part number includes both the Latch Blocker and Installation Screw.

For an inactive gear system featuring the Latch Blocker, the Latch Blocker is adjustable to provide increased length. Make this adjustment when the Latch Blocker is not providing adequate functionality. The Latch Blocker is factory installed in a recessed position. To increase the length, follow these steps:

1. Remove the Phillips head screw.
2. Rotate the Latch Blocker 90° in either direction after extracting it from the gear.
3. Re-insert the Latch Blocker.
4. Re-install the Phillips head screws. Do not over-tighten the screw.

The length adjustment is approx. 1/16". If further length is required, select the next Latch Blocker length.



* Patent Pending

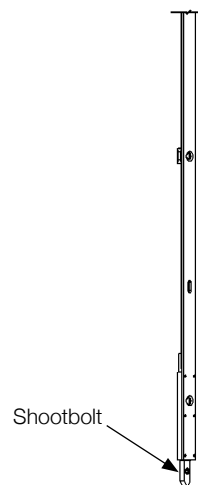
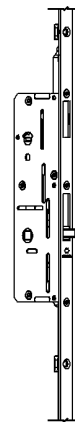
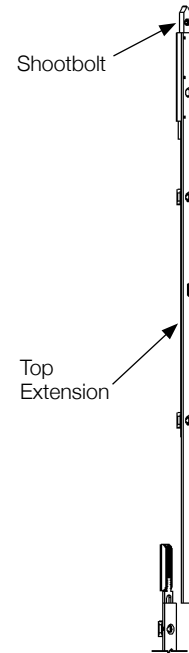
HLS™ 7 Series* Inactive Assembly Instructions

We recommend assembly of the inactive gear in the activated (locked) position. To be consistent in the operation and assembly, you should assemble the gear operator as follows:

Install main gear body assembly into stile using either method:

- a. If using a jig to center the gear on the handle hole, slide into place and screw down.
 - b. If aligning the gear from the bottom, match the bottom of the gear to the bottom of the door and put a few screws in place.
1. Operate and extend the shootbolt mechanism with the handle.
 2. Pull and/or push shootbolt out and place top extension into Eurogroove so the serrations on the extension connect to the gear serrations.
 3. Finish screwing the inactive system onto the stile. Be sure you install screws only in the holes that will not be filled when the astragal is applied.
 4. Operate the thumbturn and handle set to retract and extend the shootbolts. The shootbolt mechanisms should operate freely.
 5. The inactive gear is a two-handed operation. Turn and hold the thumbturn while depressing the handle to retract the shootbolts. Lift the handle to extend the shootbolts. The shootbolt mechanism should operate freely.

Note: There is an allowance of up to 1/8" (3mm) between the gear and extension as long as the driverail and faceplate relationship is kept intact.



* Patent Pending